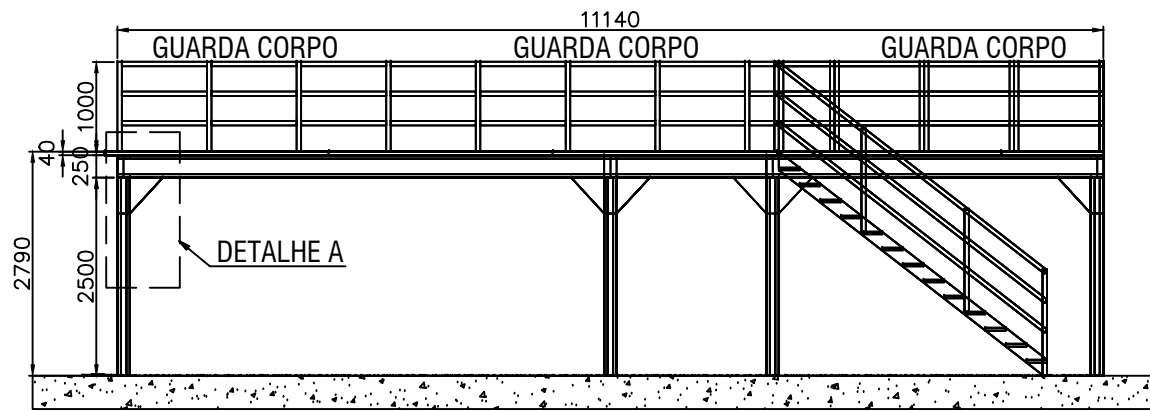
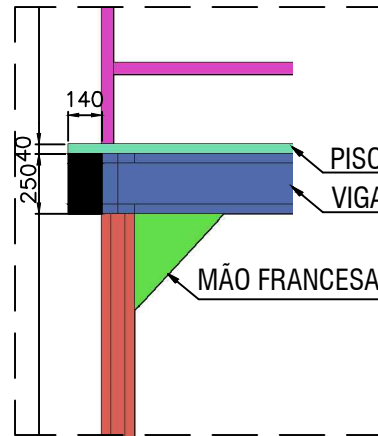


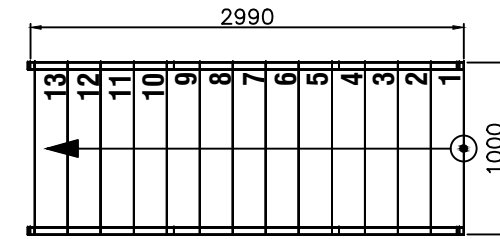
VISTA LATERAL



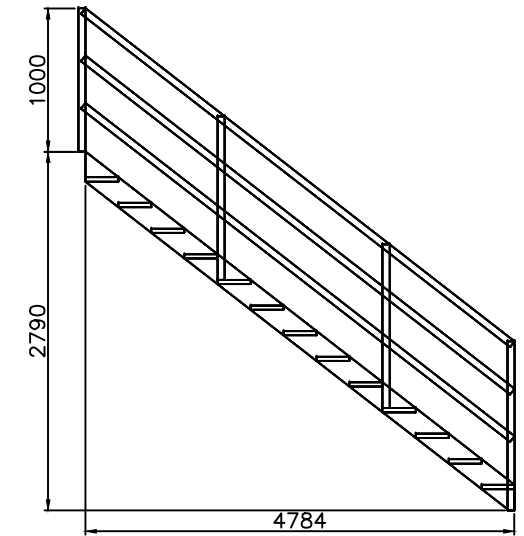
DETALHE A



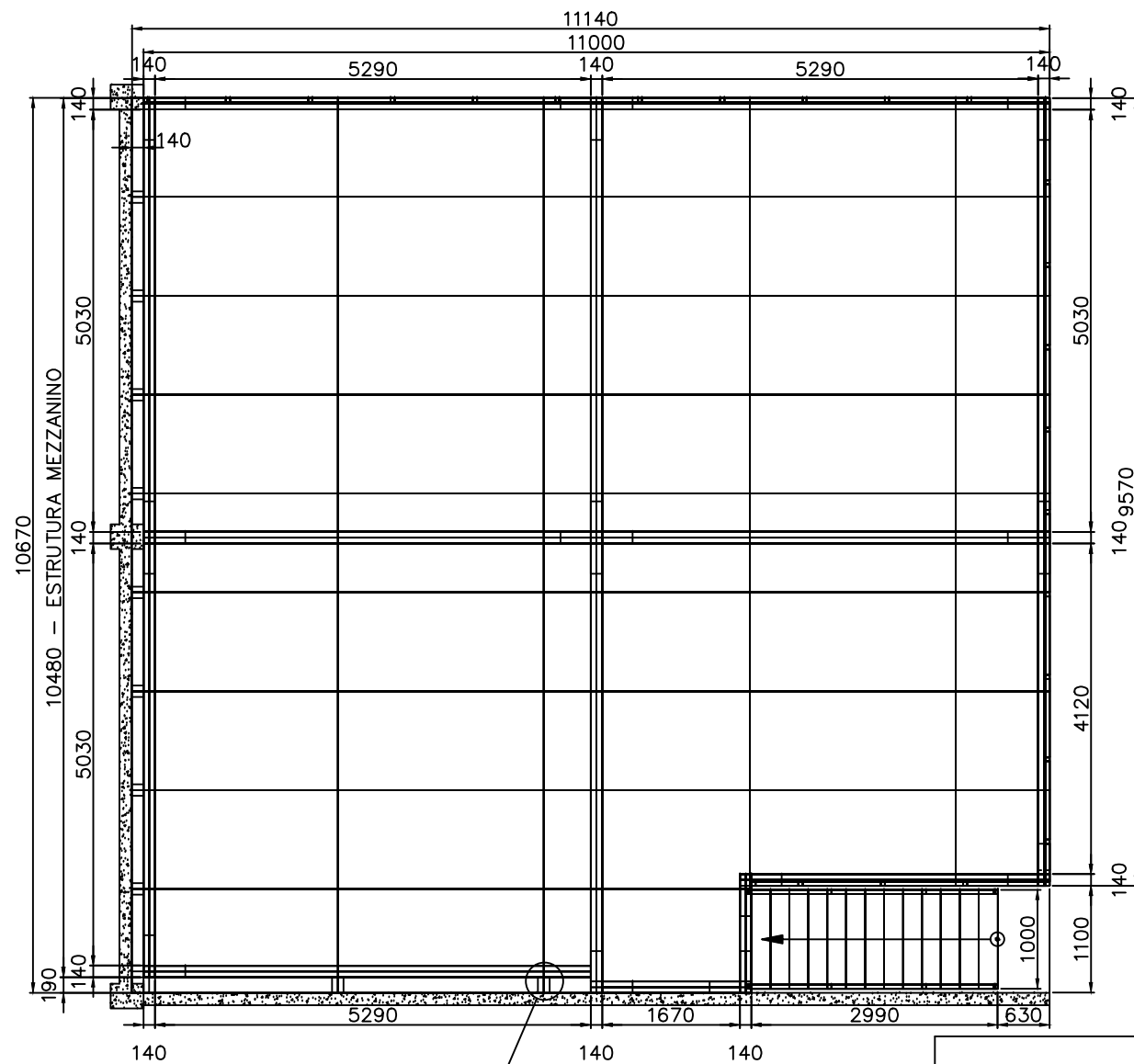
DETALHE ESCADA



NOTA: 13 PISADAS = 230mm x 1000mm
14 ESPELHOS = 199,2857mm x 1000mm

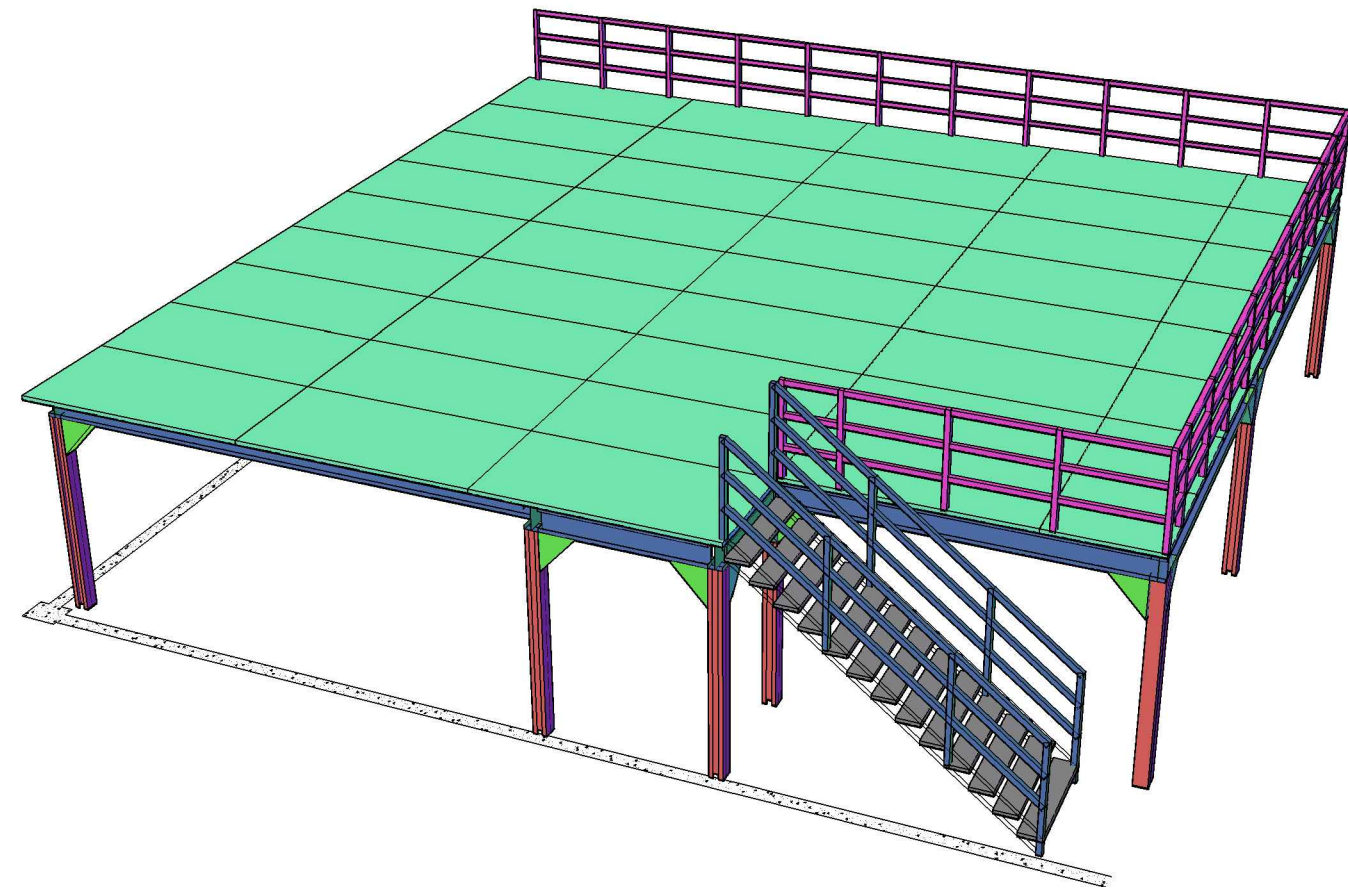


LAYOUT DO CONJUNTO



VIGAS SOLDADAS P/ PROTEÇÃO DO PISO

PERSPECTIVA DO CONJUNTO



PROJETO DE MEZZANINO

OBS.: O DESENHO DA INSTALAÇÃO PREVÊ PISO NIVELADO E APTO A SUPORTAR AS CARGAS PONTUAIS EXERCIDAS PELAS COLUNAS DAS ESTRUTURAS.

NOTA: CAPACIDADE DE CARGA UNIFORMEMENTE DISTRIBUIDA POR M²: 300 KGF

DIVICON